

GEMS

NEWSLETTER OF THE KALAMAZOO GEOLOGICAL & MINERAL SOCIETY



A MESSAGE FROM THE PRESIDENT....

Hello Rockhounds,

We are finally at that big moment for the year, the KGMS annual show. The success of the show depends on participation by all of our members. Thanks to all of you who have committed to participate, your help is greatly appreciated.

Just some quick notes on some of the Club activities at the show.

1. Club Banquet - Following the public activities on Saturday May 4 (6 pm) we will have our annual feast. This is available to all members at a cost of \$5 per person. This year we will be having a fiesta, with make your own burritos. This is a great time to take a break and socialize with other club members, our vendors, and our demonstrators. Please contact me to make a reservation prior to April 27, because we are limited on the number who can attend.

2. Display Cases - Share your collection with others. Do not be shy. Even if your collection does not fit with our theme, show off your collection. Please contact me to reserve your spot. The number of club cases available to members is limited. Better yet build your own case, that way you have it for years to come.

3. Silent Auction - This is a great way to sell some of your excess specimens. All items in the auction must have a minimum price of \$2. Upon sale, you receive 80% of the selling price and the club retains 20%. Also, the Club asks that members donate specimens to the auction. Bring in your material that you would like to sell or donate at any time, preferably during show set-up. Please let me know if you have any questions.

4. Sample Donation - If you have specimens (rocks, minerals, fossils, ...) small and large that have a value of less than \$2 and would like to donate these to the club for use at the specimen table, please bring them to the show.

5. Hospitality Room - This is a service the Club provides for all members working at the show to be able to take a break and get something to eat. The Club provides the food. However, this year we are asking members to please bring in dessert items to share. (Just a note - The President likes chocolate.)

KGMS is gathering data with regards to expanding the show for 2014, by moving to a larger exhibition room at the Expo Center. Input from our members is important. If you have any comments or would like to be part of the committee making this decision. Please contact Jerry VanNocker, Chet Parrow, or myself.

As always, please contact me with any questions you may have.

See you at the Big Show!



Rock On!

Bill Mitchell

KGMS President

BELATED BIRTHDAYS

APRIL

5th RYAN AHRENS

24th THERESA PAYNE & SHERRI CRUM



MAY, HAPPY BIRTHDAY!!!

ANYBODY????

I NEED BIRTHDAYS & ANNIVERSARIES PEOPLE!!!

NEXT MEETING is MAY 6th

OUR GUEST SPEAKER IS: Ms. Elaine Gaskin will be in attendance to present how synthetic crystals are made. This will be an informative and interesting presentation showing how crystals are grown in a laboratory type setting. Please plan on attending!

Also, this is when we get to find out how well the show did!

UPCOMING EVENTS

APRIL

27th & 28th, BENTON HARBOR, ANNUAL GEM & MINERAL SHOW, BLOSSOMLAND GEM & MINERAL SOCIETY. Orchard Mall, Benton Harbor, Contact: Nancy Wolff 269-983-4900

MAY

17th - 19th, SOUTHGATE, SOUTHEASTERN MICHIGAN GEM & MINERAL SHOW, MIDWEST MINERALOGICAL & LAPIDARY SOCIETY. Southgate Arena, 14700 Reaume Parkway, Southgate, Mi (Off Dix Highway between Eureka & Northline) 18 Top Dealers, Outstanding Exhibits & Lapidary Displays, Demonstrations - Kids Attractions - & Much More! Fri 2pm - 7pm, Sat 10am - 6pm, Sun 11am - 5pm Contact: Rich Williams: 734-330-4784, Richwill48@gmail.com website: www.mmls.us

JUNE

8th & 9th, KALAMAZOO, MI., Rockhound Seminar, M.G.A.G.S. (Michigan Geology and Gemcraft Society), Host/Location: Western Michigan University, Rood Hall near West Michigan Ave. & Rankin Ave., (East of Howard St.), Hands on Workshops - Demonstrations - Illustrated Lectures. TICKETS: PRE-PAY IN ADVANCE: Adult \$15/1 Day - \$25/2 Days or AT THE DOOR: Adult \$18/1 Day - \$30/2 Days, HIGH SCHOOL STUDENTS: \$5 per day. Contacts: Club email: info@mgags.org , Don Brown phone: (734) 421-8159 or Marve/Kitty (231) 740-5512, check website: www.mgags.org

15th, WYOMING, ANNUAL TAILGATE SALE, by INDIAN MOUNDS ROCK & MINERAL CLUB, at Wesley Park United Methodist Church, 1150 32nd St. S.W, Wyoming, MI. Sat 9 am -12 noon CONTACTS: Ed Krzeminski 3838 Crowfoot SW, Grandville, MI 49418 email: krzeminski.ed@gmail.com phone 616-530-9571 OR Gordon Spalenka 2119 Waldron St. SW, Wyoming, MI. 49519 email:gnsपालenka@sbcglobal.net phone: (616) 249-0513 Club website: www.indianmoundsrockclub.com

9th -27th, OREGON FIELD TRIP, HOSTED BY: TULIP CITY GEM & MINERAL CLUB

Anyone from a MWF club is welcome to go. Those interested should contact BOB SHERWOOD directly at bobandjulia@accn.org for further information and should let them know if they definitely plan to go, for part or all of it. The trip is recommended for responsible ages 9 and older. Collecting consists of: Petrified Wood, Thunderegg beds & more. A full itinerary is available at www.MIRockClubsPages.org

Quick facts about Oregon:

- No sales tax
- You can't pump your own gas
- Oregon is pronounced "Or-a-gun," not OR-ee-gone" (*Don't sound like an "easterner" who doesn't know any better!*)

Questions? Contact Bob Sherwood, Field Trip Coordinator, bobandjulia@accn.org (269) 637-7097

HOSPITALITY ROOM

The room is set up to feed all those that work the show, the Dealers & Demonstrators. Every year the Hospitality Room Gals ask that you bring in food to help out. However, this year, Janice & Kathy are requesting that we bring in only desserts for the Hospitality Room. The Banquet menu for this year is a "Make Your Own Burrito Bar". Tickets are limited, I believe the deadline was April 27th. Please check with Bill Mitchell to be sure!

KGMS MEETING MINUTES

APRIL 2, 2013 DRAFT KGMS GENERAL MEETING MINUTES

Call to order: At 7:05 p.m. by Bill Mitchell, President, at the Portage Senior Center.

Twenty-nine attendees, no visitors.

Door Prize winners:

Juniors - Austin Payne, Jacob Chapman, Avika Jayatilaka,

Adults - Arya Jayatilaka, Cathy Smith, Jane Beers

ANNOUNCEMENTS:

Field Trip: If interested in collecting fluorescent fluorites meet on April 6th at Ben E. Clement Museum in Marion, KT, \$25.00 per person fee. Need steel-toed shoes, gloves, change of clothing since very muddy in quarry/mine. Room for 7 people.

MGAGS Annual Workshop - June 8-9th. There will be hands-on demonstrations/training, classes, and speakers at WMU.

Indian Mounds Show: This weekend at the Rogers Plaza Town Center; Wyoming, MI. Please support.

2013 KGMS ANNUAL SHOW:

Display Cases: Let Bill know if you need a case. Last year the Lansing club brought down two memorial club cases; they were very impressed with our exhibits. Cathy Smith asked, "How does the show's selected theme relate to what a member can display?" Bill replied, "If you have something to display which ties into the theme that is great, but don't be afraid to exhibit your collection even if it doesn't tie in with theme. Contact Jerry VanNocker or Bill Mitchell if you have questions. Junior display cases - Try to make as presentable as possible; we're not expecting perfection.

Posters/Flyers: Available at the back of the room. Distribution bee will be April 11 at 8:45 at the Colonial Kitchen on Westnedge. Goal is to blanket Kalamazoo businesses with show flyers.

Silent Auction: Marve Starbuck is coordinator. Need items selling \$2.00 and greater. Can donate 100% of selling price to the club or an 80%/20% split. Club will get 20%. This is a great way to help the club and also to get some money for your next great purchase. Kate has bid sheets. Club, 100% donation, is white paper. Split donation is colored paper.

Volunteers: If you can help we can use it. Set up begins Thursday May 2 at 10 a.m. Help needed throughout the show up to and including after closing for packing up on May 5.

GEMS: Diane brought hard copies as far back as November. Help yourself.

Donation Forms: We accept any monetary amount. After a donation is received our treasurer sends out a receipt and a thank you letter. Most donations support the school bus subsidies.

May Program: James Traill has contacted an Australian who is interested in talking to us about Opals. The Australian will call in by Skype. Jim will work out the details.

June Refreshments: VanNockers will provide refreshments for an ice cream social.

Evening Program: Group worked on projects for the show

BUSINESS MEETING:

OFFICERS' REPORTS:

Treasurer: Report was read. Elizabeth Schau motioned approval and Theresa Payne seconded.

Secretary: Minutes were read. Marve Starbuck motioned approval and Jerry VanNocker seconded.

COMMITTEE REPORTS:

GSA: Club and show flyers will be provided for the North-Central Section of the Geological Society meeting May 3- 5 at WMU, but no club display. The \$150.00 cost for a booth did not seem beneficial to our needs.

Scholarship: Three WMU Geosciences Department scholarship applicant submittals. Seemed equally worthwhile.

After a discussion relating to number of and monetary amount of scholarships to award, Marve motioned increasing the scholarship overall award to \$1500 and dividing the \$1500 amount among the 3 so that each would receive \$500. Motion passed with unanimous approval.

Holland Club's Annual Banquet on 24 April:

Bill will attend. There is room for 3 more attendees.

2013 Annual Show:

Mailings: Kate provided address labels to Kitty Starbuck.

Show Layout: Revision discussed for silent auction and children's games locations. Jerry will notify Mandy at the Expo Center

Masking Tape for Tables: Bill will bring.

Banquet: Janice Ahrens will prepare food for 50 attendees, the normal number of attendees. Jack Fuller recommended there be a \$5.00 charge per person, except for vendors and demonstrators, which would allow us to get an attendance count.

Geodes: Marve and Tony will place order including freight costs.

Tony wondered if we were conducting a student poster competition this year. No one attending the meeting had the answer so at the Board meeting this will be addressed.

Board Meeting: Elizabeth Schau's house April 15th at 7 p.m.

Summer Program at Coldwater Library: The club has received a request to conduct a geology summer program at the library. More information will be provided in May.

Meeting Adjourned: 8:52 p.m.

Allison VanNocker

Secretary

Approval date:

APRIL 15, 2013 DRAFT KGMS BOARD MEETING MINUTES

Call to order: At 7:10 p.m. by Bill Mitchell, President, at Elizabeth Schau's home.

Board of Control Voting Members: There was quorum.

Treasurer's Report and Secretary's Report - Reports read and approved.

Committee Reports:

WMU Scholarship: Bill will present checks on April 19th at WMU banquet. Awardees will present at September meeting.

Education:

Requests for pre-ticket sales arrived. Two more schools making student total 1000-1050.

Montessori school needs 3 samples each of igneous, metamorphic, and sedimentary rocks and fossil samples for each Michigan geological time period. Club members will provide.

Badges arrived for the Junior Rock Hound students. Sherri will present.

Annual Show:

Displays:

Jeff Barney from WMU will provide core samples Saturday and Sunday plus a display. POC for next year is Ms. Linda Harrison.

Kingman Museum will provide enough mastodon items for 4-5 cases.

Advertising:

Board agreed to purchase ad space from Battle Creek Shopper for \$200. This includes an article, distribution to 3 areas, and coupons. Article appears May 2 and coupons April 25th.

Club will submit to Kalamazoo Gazette Happenings calendar. This is free.

Juliana restaurant wants to receive advertising at our show. Board agreed Jerry will contact Juliana about donation support to KGMS. He will also work on a display to recognize KGMS donors.

Banquet: Bill will collect money.

Signs: Hospitality room sign required.

Expo Room Layout: Ensure room available for UV display. Jerry will follow up with Expo Center.

Geodes: Estimate of \$1330 for 700 pounds (3 year supply) and transport fee. Board voted to purchase.

Tailgate Swap-meet Date: Possibly September 21.

2014 Theme Suggestions: "Opals and Mineraloids"; "Agates"; or "Rocks and Minerals - A World of Colors". No decision made.

Field Trips: May 18th with the Michiana Club to Kentucky for fluorites. Sherri will forward info to Jack so membership can be informed.

Registration Forms: Emphasize complete addresses with zip codes and include email addresses.

Meeting Adjourned: 8:40 p.m.

Allison VanNocker

Secretary

Approval date:

THE LAST ON THE MASTODONS



Mastodon trackway at the Brennan site near Saline, Michigan.

Excavation of skeletal remains of a late Pleistocene *Mammot americanum* (American mastodon), preserved in pond sediments in southeastern Michigan, led to discovery of a trackway of another proboscidean..... Most depressions are compound prints, recording the outline of a relatively round forefoot, over which is superimposed the more oval hindfoot. Comparison with trackways of extant elephants suggests the gait was a slow walk, and from the size of the prints (forefoot diameter ca. 50 cm; hind-foot ca. 45 x 60 cm), the animal must have been a mature male. The regional abundance of mastodons relative to mammoths and the relation between stride length (ca. 2.5 m) and foot size suggest that the animal was a mastodon.

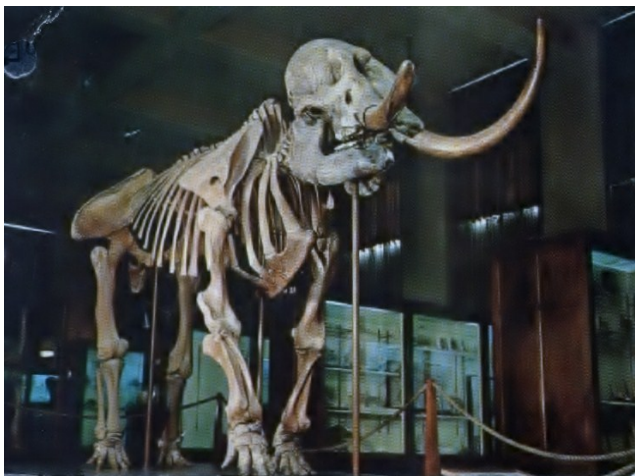
Set of preserved mastodon footprints found at the Brennan site near Saline, MI.

In May 1962, relics were unearthed on the farm of Stan Borkowski on Duffield Rd. near Lennon, Michigan. The bones were discovered just 15 feet below the ground when a pond was being excavated. PHOTO RIGHT



Zoologist, George Buck, LEFT, of Flint, Michigan examines the mastodon skull. The Borkowski farm is situated on a ridge which Buck said marks the beginning of the Saginaw Valley. The "beach" on which the bones were found is known to archeologists as the Saginaw Beach. The lake dried up thousands of years ago. Buck said it was possible that the mastodon came to the lake for a drink and got stuck in the clay, a strip of which lies beneath a layer of beach sand.

Uncovered near Lennon, was a 10 foot tusk, a skull measuring 32" wide and other bones resembling ribs and a vertebrae. The skull weighed about 600 pounds.



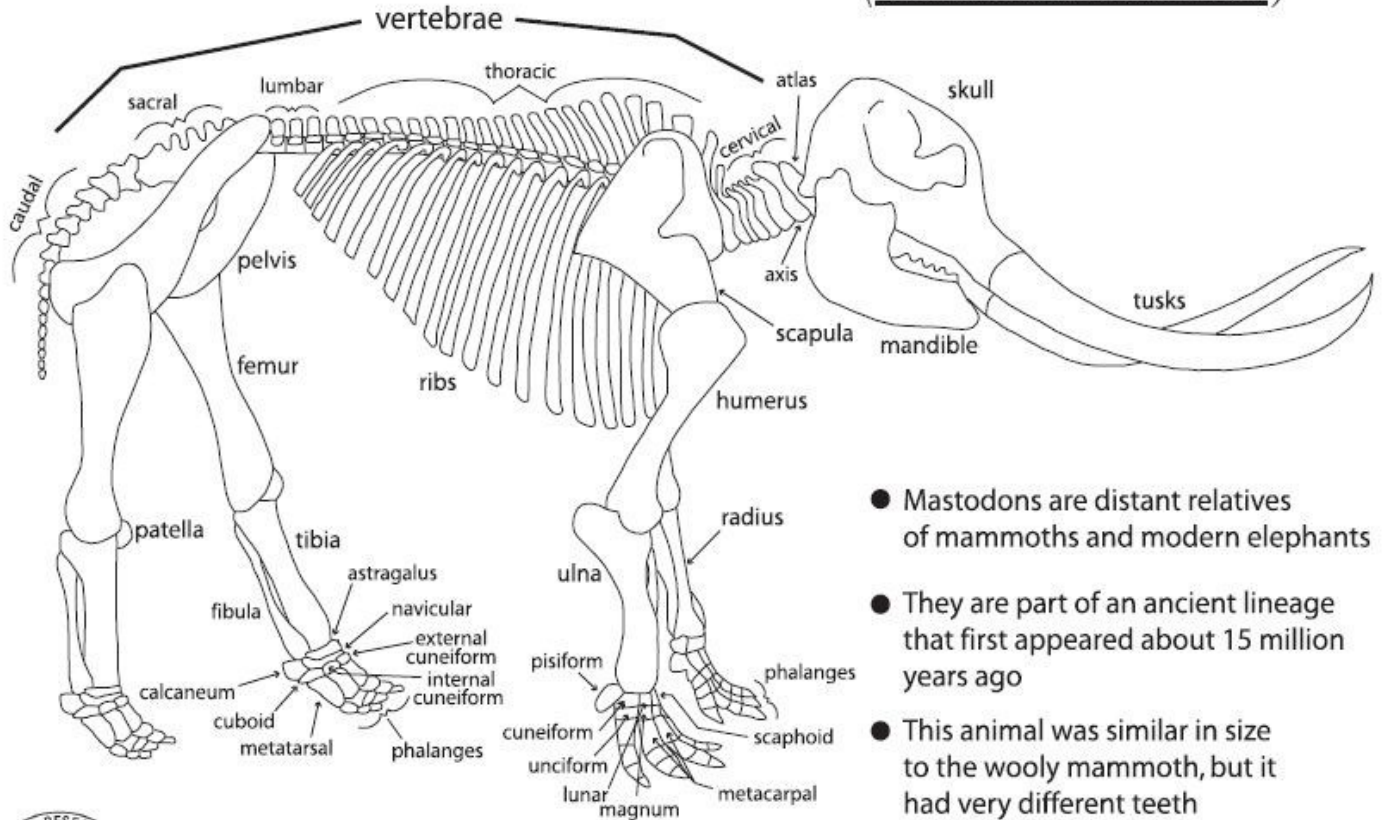
OWASSO MASTODON found 1944 in RUSH TOWNSHIP

Perry Township Mastodon

In September 2001, Mastodon bones were also found on property belonging to Sue and Ron Hammond on Beard Rd. west of M-52 in Perry Twp. According to Dr. Dan Fisher of the University of Michigan, the beast was most likely hunted down by Paleo Indians. These people came to North America from Siberia on the Bering (now Sea) Land Bridge, thousands of years ago. After these bones have been carefully studied and cataloged, they will be displayed at the Calkins-MacQueen House museum in Perry, MI.

Source: <http://www.shiawasseehistory.com/mastodon.html>

American Mastodon (*Mammot americanum*)



- Mastodons are distant relatives of mammoths and modern elephants
- They are part of an ancient lineage that first appeared about 15 million years ago
- This animal was similar in size to the woolly mammoth, but it had very different teeth
- Mastodons became extinct 10,000 years ago, probably as a result of climate change as the Earth warmed



©Paleontological Research Institution
1259 Trumansburg Rd (Rt 96)
Ithaca, NY 14850
<http://www.priweb.org>
<http://www.museumoftheearth.org>

American Mastodon, *Mammot americanum*

This specimen is the most complete, and one of the better preserved, mastodons discovered in the state of Michigan.

This species of mastodon existed during the Pleistocene (about 2 million years ago) until about 10,400 years ago, and ranged from Alaska and the Yukon down to Central Mexico. About 11,000 years ago, when this individual lived, they were common around the Great Lakes and the Atlantic coast, feeding on plants in open spruce or pine woodlands and along wetland margins. Mastodons were still here when prehistoric humans arrived in Michigan late in the Pleistocene.

Males of the species grew to be 3 meters (10 feet) tall at the shoulder and had tusks over 2.5 meters (8.5 feet) long, but females were significantly smaller. The state of development of this individual's bones, along with the wear on its teeth, indicate it was fully grown. Its body size and tusk size are well within the range for females. The worn edges on the broken tusk reveal that the breakage occurred during her lifetime.

Mastodons have had an evolutionary history separate from that of mammoths and elephants for at least 20 million years. Nonetheless, all of these animals resemble one another in overall body form and are placed in the same order of mammals.

FROM THE EDITOR:

I hope everyone has enjoyed the Mastodon & Brachiopods series I have done for our upcoming show! My head is spinning with tusks & fur! What an amazing animal the Mastodon was. Can you imagine carrying all that weight around? Do you suppose they had flat feet?

OFFICERS

PRESIDENT

Bill Mitchell
269-375-5678
mitchellvickybill@sbcglobal.net

VICE PRESIDENT

Elizabeth Schau
269-344-7198

SECRETARY

Allison VanNocker
269-979-3348

TREASURERS

Kate Dutrow
269-372-2177
katedutrowus@yahoo.com

Chet Parrow
269-372-2177
chetR907@aol.com

FIELD TRIP COORDINATOR

Jack Fuller
269-353-5372
jack.fuller@experis.com

WEBSITE COMMITTEE

Jack Fuller
269-353-5372
jack.fuller@experis.com

Jerry VanNocker
269-979-3348
jerry@travelinginspain.com

Diane Peterson
269-962-0874
rockin_gem@yahoo.com

BOARD MEMBERS

Jack Fuller
269-353-5372
jack.fuller@experis.com

Tony Payne
269-962-4912
rockclub01@comcast.net

Diane Peterson
269-962-0874
rockin_gem@yahoo.com

MWF LIAISON

Marve Starbuck
269-649-1991
greenstone@iserv.net

LIBRARY

Jack Fuller
269-353-5372
jack.fuller@experis.com

EDUCATION COMMITTEE CHAIR

Sherri Crum
269-383-3731
KGMS_rockshow@yahoo.com

SHOW COMMITTEE CHAIR

Jerry VanNocker
269-979-3348
jerry@travelinginspain.com

GEMS EDITOR/PUBLISHER

Diane Peterson
269-962-0874
rockin_gem@yahoo.com

KGMS website:

www.kalamazoorockclub.org

MEETINGS

Monthly meetings are the first Tuesday of each month except: January, July and August
Location: Portage Senior Center
320 Library Lane Portage, MI 49002
Phone: 269-329-4555
Work bees/Picnic Dates
TBA in July and August

2013 KGMS ANNUAL SHOW

(May 3rd, 4th & 5th 2013)
Always the weekend before Mother's Day at the Kalamazoo County Expo Center
2900 Lake Street (Kalamazoo Fairgrounds)
Kalamazoo, MI 49048
phone: 269-383-8778
www.kalcounty.com/parksshow_calendar_expo.php

CLUB DUES

Due by December 31st
Family \$15.00/year
Single \$13.50/year
Senior/Couple 60 yrs \$13.50/yr
Senior/Single 60 yrs \$10.00/year
Student \$8.00/year

AFFILIATED WITH

AFMS: American Federation of Mineralogical Societies
website: www.amfed.org

MWF: Midwest Federation of Mineralogical and Geological Societies
webpage: www.amfed.org/mwf

MICHIGAN ROCK CLUBS PAGES

MIRockClubsPages.org
Administrator/Editor: Diane Peterson
269-962-0874
rockin_gem@yahoo.com

Happy Mother's Day!



FROM: KALAMAZOO GEOLOGICAL & MINERAL SOCIETY
c/o Diane Peterson, Editor
19 Wren St., Apt. A
Battle Creek, MI. 49017

TO: