



**NEWSLETTER FOR THE  
KALAMAZOO GEOLOGICAL & MINERAL SOCIETY  
JANUARY 2014**

Hello Rockhounds,

We have had a little time off from Club activities, now it is time for the push toward the Big Show in May. A great deal of work goes on behind the scenes that many of our members are not involved with or aware of. On the other hand there are many things our members can do to make our show a success.

First, block off time during the weekend of May 1 to May 4 on your schedule. We are always in need of personnel to work at the show. You are not expected to work the entire event, but any time you have will be greatly appreciated. Briefly, we begin set up the morning of May 1, Kid's Day is 9:00 am to 3:00 pm on Friday May 2, then we are open to the public from 4:00 to 8:00, 10:00 am to 6:00 pm on Saturday May 3, and 10:00 am to 5:00 pm on Sunday May 4. Following closing on Sunday we need to tear down and pack up.

Things we need our members to do:

- Volunteer your time to work at the show. No experience needed. Just able bodies and smiling faces. You do not need to work the whole show, but we do expect each member to work a portion.
- Display your collection. This is a great opportunity to share your treasures. Each year, and last year in particular, we received many comments from patrons saying how much they enjoyed the displays.
- Make a dish to share for the hospitality room.
- Advertise. Spread the word. Tell friends and family, write a story to get word out in the school newspaper or your church newsletter, help distribute and post flyers, ...

The mission of our Club is to educate the public with regard to the geological sciences and the lapidary arts. Our show is aimed at reaching the public with our mission. It takes contributions from every member to make the show a success. So please be involved.

Rock On!

*Bill Mitchell*

KGMS President

\*\*\*\*\*

**HAPPY BIRTHDAY!**

## **JANUARY**

1<sup>st</sup> Dennis Guy  
5<sup>th</sup> Tony Payne  
11<sup>th</sup> Victoria Mitchell  
25<sup>th</sup> Katie McGuire  
31<sup>st</sup> Ken Ahrens



## **FEBRUARY**

4<sup>th</sup> Gloria Henrich-Meekof  
12<sup>th</sup> Brent Mitchell  
24<sup>th</sup> Janice Ahrens

## FEBRUARY CLUB MEETING

With another set of field trips scheduled this winter to the Alabastine Mine, our February KGMS club meeting will include a presentation and discussion about gypsum. What is gypsum, how is formed, where is it present in Michigan, and what economic impact has gypsum mining had on Michigan.



\*\*\*\*\*

## 2014 KGMS ANNUAL GEM, MINERAL & FOSSIL SHOW

### Things You Should Know About the KGMS Show

By Bill Mitchell

#### Display Cases

One very important part of our show is our display case venue. In this area Club members, like you, and KGMS guests show off and share portions of their collections. Forms will be available at Club meetings prior to the show to reserve your spots. The Club has some cases for use by our members. So reserve your spot early to ensure your spot. Don't be shy, if you think you have some cool stuff, others will think it is cool too. This year's show theme is "Rocks and Mineral - A World of Color". You can follow the show theme or create your own. It is suggested that each of the specimens you display are labeled. Please contact Bill Mitchell with any questions.

#### Donations to Club

Each year the Club solicits donations from area businesses and the public. The Club has a letter prepared that you can present to potential donors explaining who the Club is, what our mission is, and how we would use the donated funds. These letters are available at all of our regular meetings. KGMS is an educational not for profit organization, so donations are tax deductible. Please get out and solicit donations - ask at your favorite restaurants, family, friends, employer, ...

#### Silent Auction

This is a very popular area with our patrons. Periodically during the show we will have auctions where our members and guests can bid on really cool specimens, lapidary items, equipment, ... This is an opportunity for members to sell items they have acquired. Maybe you are running out of storage space and need to create space for what you will be collecting on upcoming trips. How it works - bring in items you wish to sell or donate to the show (it is helpful if you bring items in on Thursday (set up day)), complete a bid form, and set the minimum price that you think it is worth. For items in the Silent Auction we ask that items have a minimum value of \$2. When it sells you receive 80% of the selling price and the Club retains the other 20%. The Club asks that each member to donate at least two (2) items to the Silent Auction. You can try to sell as many as you want.

#### Game Prizes

Kids are a big part of our show. Our game area is very popular, particularly during Kid's Day. Each year we give out thousands of prizes. Where do these prizes come from? The prizes are generally donated to the Club from members. Each prize is bagged and labeled. So if you have smaller specimens that could be used as game prizes, please let us know and we can get specimen bags to you.

#### Door Prizes

Periodically during the show we have door prize drawings for our patrons, both adult and kids. We are always looking for donations. If you have specimens, books, crafts, nick-nacks, that would make a nice door prize, please bring them to the show.

#### Specimen Table

Most of the material at the Specimen Table sells for 25 to 50 cents, but we have \$1 and \$2 corners. All of the material is donated by Club members. So if you have **clean** material, please bring it in.

## **Banquet**

Following closing of the show on Saturday, we have a catered dinner. It is a nice time to relax and take a deep breath after a busy day. Details of the menu and cost will be available soon.

## **Hospitality Room**

The Hospitality Room is available to members working at the show to rest, grab a snack, or a meal. The Club provides the majority of the food and drink, however we do ask for volunteers to bring in items throughout the show. Please contact the Hospitality Chair Kathy Smith (671-4768) for more information.

If you have any questions regarding the show and how you can contribute, please contact Bill Mitchell or Jerry VanNocker.

## **2014 KGMS SHOW BIGGER AND BETTER**

**By Jerry VanNocker**

This year we are moving the show to the South Hall of the Kalamazoo Expo Center; same location different room. The larger space will allow us to move all education and craft activities into the main show area and add additional dealers. We have all booths for the 2014 Show filled.

### **We Need Your Help to get the word out.**

May 2nd may seem like a long time off but it only leaves three months to get the word out on our annual Rock and Mineral Show.

It was your hard work that made the 2013 show a great success. For every KGMS member that formally took on a marketing task to promote the show there were countless others in our membership that forward e-mail notices of our show, passed out flyers on their delivery route, made Facebook announcements, placed a poster in their company's break room, posted and left flyers in public locations and personally invited their friends to come to the show.

Please think about how you can contribute in making the 2014 KGMS Show a success. Our top marketing activity (direct mailing) contributes no more than 20% to our attendance. It is our collective marketing efforts that bring in the other 80% of attendees to the Show.

In addition to the marketing activities we did last year here is a list of new promotions we are doing for the 2014 KGMS Show:

#### **Mineral trading cards mini flyers**

**WMU geology club has been asked to help promote the KGMS show on the WMU campus.**

**Astronomy Society will be asked to promote the KGMS show. They will have a booth at the 2014 KGMS Show.**

**Grand prize e-mail addresses from the 2013 show will be used to promote the 2014 show**

**along with the e-mail addresses collected from the Kalamazoo Fair and Kingman Museum events.**

**YouTube video advertisement.**

**Car door magnet signs for members to advertise the show.**

**4 road side billboards advertising the show for a week in April.**

**Four page, magazine size, and style, flyer to be placed in waiting rooms and lobbies as early as February.**

Again, please think about how you can help market the show. Do not hesitate to e-mail ([jerry@travelinginspain.com](mailto:jerry@travelinginspain.com)) or call me (269 979 3348) for guidance or to give suggestions. Magnet signs will be available by sign-out as we plan to reuse these signs yearly. If you would like a sign please contact me.

At the February General meeting I will start distributing some marketing literature to the membership but much of our marketing effort will be concentrated the four weeks prior to the show. Starting in February, show flyers will be available for download on the KGMS website ([KalamazooRockClub.org](http://KalamazooRockClub.org)). Members unable to attend KGMS meetings may request flyers be mailed to them.

I will be following up with the membership shortly on the dates for the Flyer Distribution Work-bees.

\*\*\*\*\*

## UPCOMING EVENTS

### FEBRUARY MSG (Mineral Study Group) MEETING

Hi KGMS!

Keith Agdanowski has arranged for us a KGMS Mineral Study Group (MSG) on Michigan Fossils. (I know, not minerals, but still a topic of interest to a lot of us.)

On Saturday, February 8th at 1 PM all KGMS members, friends and family are invited to participate in a MSG meeting.



**LOCATION:** Michigan Geological Repository for Research and Education (MGRRE) - see directions below.

**ACTIVITY:** Dr Voice is making arrangements for a WMU faculty member to give a 20 minute presentation on fossils. Following the presentation there will be a Q&A and younger children will be taken to a separate room for activities. Bring your fossils to share with the group and get them identified. For those of you that have not been on any of the Geological Societies's fossil collecting field trips this is an excellent opportunity to get familiar with the specimens types you can find in Mi. If time allows, KGMS members are asked to stay for a short meeting after the fossil study meeting in-order to plan future MSG activities.

**PLEASE NOTE** - There will be no tour of the MGRRE Facilities. KGMS is planning a general meeting at MGREE for a tour of Repositories core samples in the future for those that missed the last MSG meeting.

**WHO SHOULD ATTEND:** The program at MGREE is targeted to families, children are welcomed, non-KGMS members may also attend.

**MGRRE is at 5272 West Michigan Avenue, Kalamazoo, MI.** Once you go through the fence gates you may go either straight right or to the left. The MGRRE building and entrance is to the back left (northwest) corner of the complex.

**Directions to MGRRE** - map at <http://wsh060.westhills.wmich.edu/MGRRE/maps.shtml>

#### FROM THE SOUTH OR NORTH

From US131, take exit #36B/Stadium Drive onto Stadium Drive, (west) towards Oshtemo—go ~0.5 miles.

Turn right (north) on S. 11th Street (stoplight)—go 0.1 miles.

Turn right on W. Michigan Avenue (4-way stop sign)—go 0.3 miles and arrive at 5272 W. Michigan Avenue.

Our driveway is the first one just past the US-131 overpass on the left (north), through the fence gates. Our building is the largest one in this fenced area.

#### FROM THE EAST OR WEST

From I-94, exit onto US 131 North—go about 2.5 miles

Take exit #36B onto Stadium Drive (west) towards Oshtemo—go ~0.5 miles

Turn right (north) on S. 11th Street (stop light)—go 0.1 miles

Turn right on W. Michigan Avenue (4-way stop sign)—go 0.3 miles and arrive at 5272 W. Michigan.

Our driveway is the first one just past the US-131 overpass on the left (north), through the fence gates. Our building is the largest one in this fenced area.

### MARCH 2014

1st - 2nd,

LIVONIA, MI., THE ROAMIN CLUB'S 42nd ANNUAL SPECIAL AUCTION

14<sup>th</sup>-16<sup>th</sup>

JACKSON, MI., MICHIGAN GEM & MINERAL SOCIETY'S 52nd ANNUAL SHOW "ROCK YOUR WORLD"

**THEIR FLIERS ARE ON THE NEXT 2 PAGES!**



42nd Annual  
**SPECIAL AUCTION**

OVER 1500 ITEMS  
MINERAL & LAPIDARY MATERIAL



HOURLY SILENT & VERBAL AUCTIONS

COMMERCIALY OBTAINED MATERIAL

FREE ADMISSION - FREE PARKING

BEVERAGES & FOOD AVAILABLE

LOW PRICED MATERIAL AT "MINI" TABLE

SPECIAL CHILDREN'S AUCTIONS

HOURLY DOOR PRIZES & DAILY GRAND PRIZES

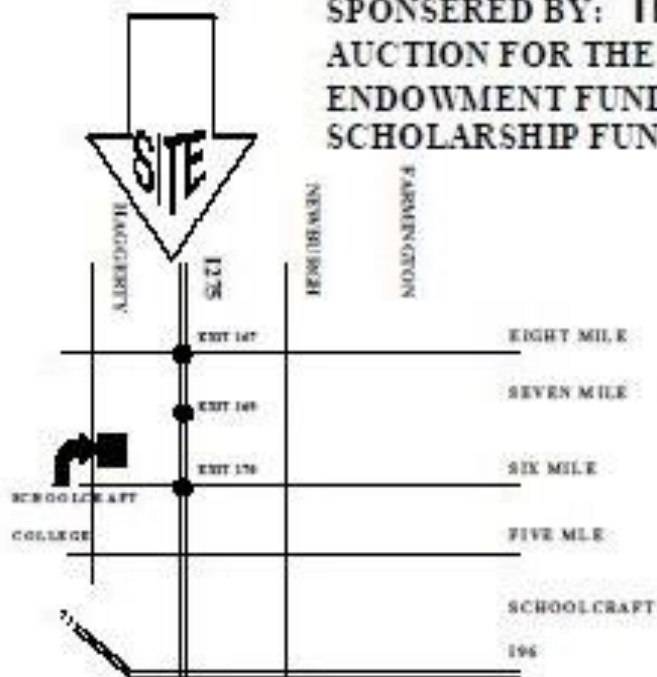
"Guess How Many" Contest

SPONSERED BY: **THE ROAMIN CLUB**  
AUCTION FOR THE BENEFIT OF THE ROAMIN  
ENDOWMENT FUND & THE TOM WILLIAMS  
SCHOLARSHIP FUND at SCHOOLCRAFT COLLEGE



March 1st - 2nd  
SATURDAY, 11:00 AM - 6:00 PM  
SUNDAY, 12:00 NOON - 6:00 PM

**SCHOOLCRAFT COLLEGE**  
VISATECH CENTER BLDG.  
18600 HAGGERTY ROAD  
LIVONIA, MICHIGAN



FOR INFORMATION CONTACT: TODD GALL 248-348-5093  
DON BROWN 734-421-8159

ROAMIN Club is sponsored by Livonia Parks & Recreation

# MICHIGAN GEM & MINERAL SOCIETY

Rock Your World!



## MGMS

### 2014 DEALERS

Archy's Rock Shop  
Canton Collectables  
Dave's Carvings  
D'Jar Meteorites  
EMGem  
Harris Enterprises  
KY Rocks  
LaMont's Rock Shop  
M & W Minerals  
Manning's Rock Shop  
Nature's Expression  
Nayab Minerals  
Russell's Trees  
S & S Gold and Diamonds  
Silver Dream

Service Personnel attending in Uniform will  
have FREE admittance.

## 2014 Annual Show

\* YOUNG PEOPLE ACTIVITIES \* Gems \* Minerals \* Fossils \* Beads \* Jewelry \*

\* Lapidary Supplies \* Demonstrators \* Exhibits \*

\* Displays \* 3-Days of Silent Auction \* Door Prize Drawings \* Raffle

OVER 20 DEALERS AND DEMONSTRATORS!

### MARCH 14TH, 15TH, 16TH, 2014

Friday 11:00am - 7pm

Saturday 10:00am - 7pm

Sunday 11:00am - 5pm

Adults \$4.00

Seniors \$2.00

Students \$1.00

Children 4 and under Free

### Jackson County Fairgrounds

American One Event Center

200 West Ganson Jackson, MI

For Information & Questions Contact:

Sally at: (517) 522-3396

[www.mgmsrockclub.com](http://www.mgmsrockclub.com)

email: [info@mgmsrockclub.com](mailto:info@mgmsrockclub.com)

School groups and other Organizations

are more than welcome to attend.

Email us for more information!



## FIELD TRIPS

JUNE 2014

We have been invited on field trip to Wyoming by the Three Rivers Gem & Mineral Society (Fort Wayne, IN).

Here's the information on a field trip to Wyoming.

If anyone is interested, please send your responses to: Jim Philipps at

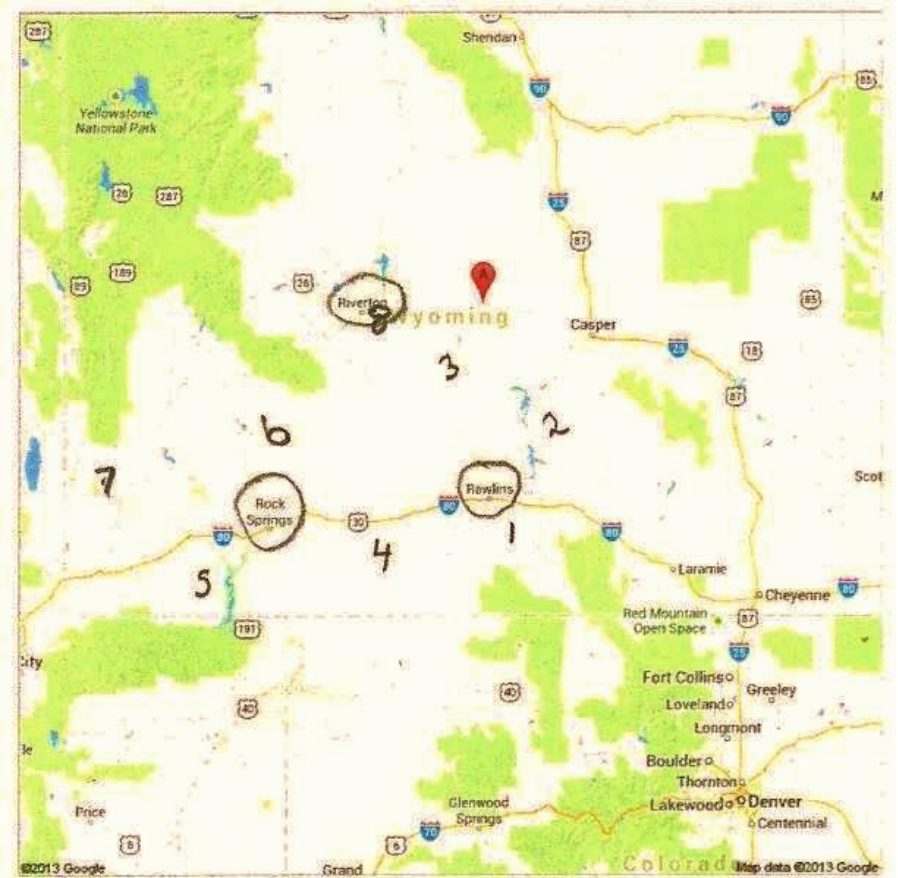
[jwphilipps@gmail.com](mailto:jwphilipps@gmail.com)

Three Rivers Gem & Mineral Society  
Fort Wayne, Indiana

MAP at right>>>

**RAWLING - 20st - 22nd**

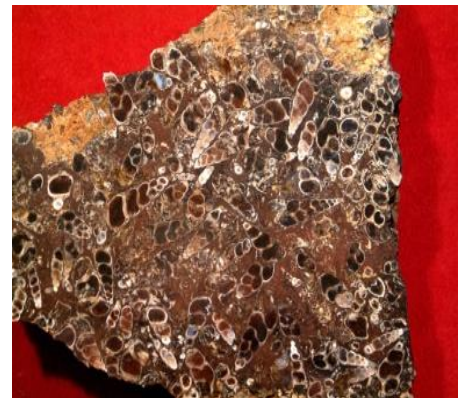
1. AGATE - OPALIZED WOOD
2. MOSS AGATE
3. AGATE FLATS
4. BLACK TURITELLA -  
at WAMSUTTER DELANEY RIM
5. AGATE - BANDED JASPER
6. BLUE FOREST PRTRIFIED WOOD  
EDEN VALLEY PRTRIFIED WOOD
7. VINCH' S FOSSIL GALLERY  
RIVERTON - 26th - 28th
8. WIND RIVER IRIS AGATES



**June-20, 21, 22**  
**Rawlins Wyoming**

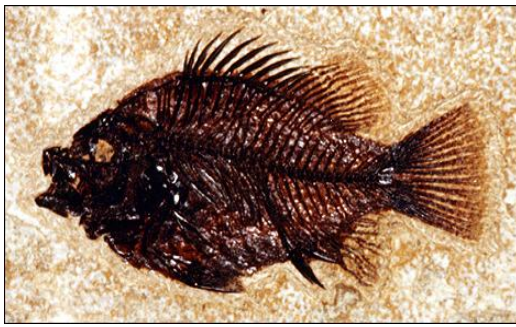
Things to find:  
Moss Agate  
Agate  
Petrified wood  
Red Jasper (photo left)  
Opalized wood

**Wamsutter Wyoming**  
Black Turitella Agate  
(photo right)



**June 23rd - 25th**  
**Rock Springs Wyoming**

Things to find-  
Agates  
Opalized wood  
Petrified palm  
Blue Forest- Petrified wood (photo left)  
Eden Valley- Petrified wood



Ulrich Fossil Gallery- Fish Fossils  
(photo left)



June 26th - 28th  
Riverton Wyoming

Things to find-  
Wind river agate  
Apple Green Jade (photo left)  
Fossils - Dino Bones

\*\*\*\*\*

TREASURER'S REPORT FOR BUSINESS MEETING JANUARY 2014

2395	1.12.14	Kate Dutrow - reimbursement for receipt book			7.19
2396	1.20.14	Marve Starbuck - Reimbursement for bags	\$26.00	\$0.00	
		TOTAL	\$26.00	\$7.19	

BALANCES

	CHECKING	CERTIFICATE	SAVINGS
BEGINNING BALANCE	\$7,837.86	\$6,126.51	\$3,087.53
+ INCOME	\$200.00	\$0.00	\$0.00
-EXPENSES	\$33.19	\$0.00	\$0.00
TRANSFERS	\$0.00	\$0.00	\$0.00
ENDING BALANCE	\$8,004.67	\$6,126.51	\$3,087.53
	\$8,100.81		

NOTES: Beginning balance is as of 12/31/2013  
Savings includes Scholarship funds = \$1000.00  
Trailer fund = \$341.88  
501( C )(3) = \$ 0.00

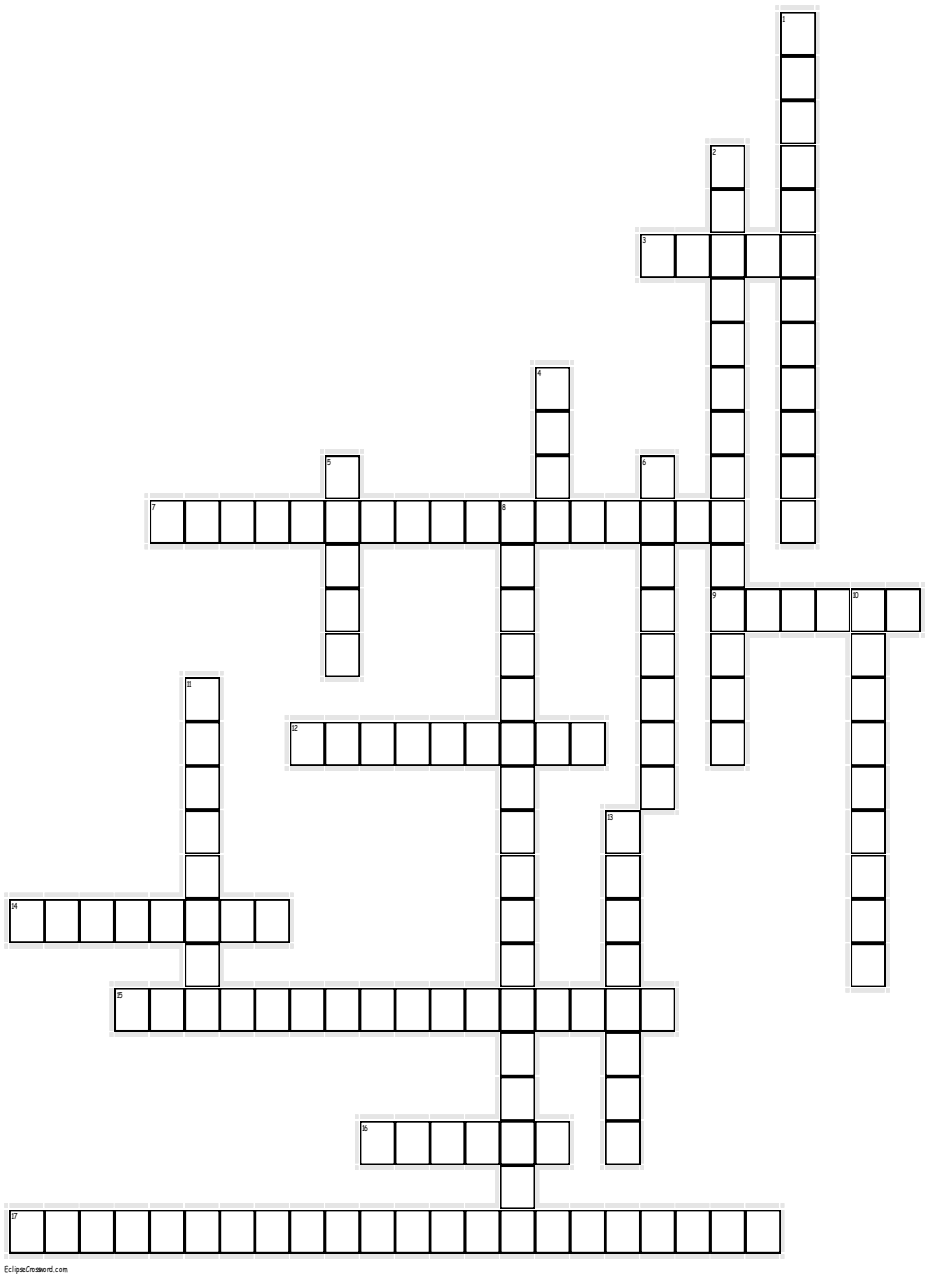


## MINERALS TWO CROSSWORD

WITH OUR 2014 SHOW ABOUT MINERALS I'M GOING TO DO A MINERAL CROSSWORD PUZZLE IN EACH GEMS PRIOR TO THE SHOW. THE ANSWERS WILL BE ON THE LAST PAGE. PLEASE GIVE ME FEEDBACK ABOUT THE PUZZLE. I HOPE IT WILL HELP US LEARN MORE ABOUT MINERALS!

### ACROSS

3. The most collectible of Lake Superior's native rocks and minerals.
7. Cluster of points that looks similar to canine teeth.
9. A dark greenish gray to black, some are dark reddish-brown, volcanic rock.
12. Brown, red, or yellow sand-sized grains of quartz "cemented" together
14. Cali-flower outside texture, porcelain-like white or pink inside.
15. Rare Agate has been crushed then randomly reformed with Silica and Quartz.
16. The base is where a crystal or many crystals sit
17. Small dark to light green nodules with a "turtle back" pattern when broken or polished



### DOWN

1. A black-brown, silica-rich, roundish semi-transparent volcanic rock, a legend of Indians found in the SW.
2. Very common mineral, can be white, gray, light yellow, usually translucent and resemble frosted glass
4. Flaky Mineral
5. A combination of minerals
6. A crystallization or solidification of a compound.
8. Microscopic "hidden crystals"
10. Feels slightly chalky, contains traces of fossils of millions of years ago
11. Well formed tabular, clear, gray, white, green, golden brown, and closely related to fibrous gypsum
13. A piece of a cut and polished mineral used to make jewelry.

## KGMS OFFICERS

### PRESIDENT

Bill Mitchell  
269-375-5678  
[mitchellvickybill@sbcglobal.net](mailto:mitchellvickybill@sbcglobal.net)

### VICE PRESIDENT

Elizabeth Schau  
269-344-7198

### SECRETARY

Allison VanNocker  
269-979-3348

### TREASURERS

Kate Dutrow  
269-372-2177  
[katedutrowus@yahoo.com](mailto:katedutrowus@yahoo.com)  
Chet Parrow  
269-372-2177  
[chetR907@aol.com](mailto:chetR907@aol.com)

### FIELD TRIP COORDINATOR

Jack Fuller  
269-353-5372  
[jack.fuller@experis.com](mailto:jack.fuller@experis.com)

### WEBSITE COMMITTEE

Jack Fuller  
269-353-5372  
[jack.fuller@experis.com](mailto:jack.fuller@experis.com)

Jerry VanNocker

269-979-3348  
[jerry@travelinginspain.com](mailto:jerry@travelinginspain.com)

Diane Peterson

269-962-0874  
[rockin\\_gem@yahoo.com](mailto:rockin_gem@yahoo.com)

## BOARD MEMBERS

Jack Fuller  
269-353-5372  
[jack.fuller@experis.com](mailto:jack.fuller@experis.com)  
Tony Payne  
269-962-4912  
[rockclub01@comcast.net](mailto:rockclub01@comcast.net)  
Diane Peterson  
269-962-0874  
[rockin\\_gem@yahoo.com](mailto:rockin_gem@yahoo.com)

### LIBRARY

Jack Fuller  
269-353-5372  
[jack.fuller@experis.com](mailto:jack.fuller@experis.com)

### MWF LIAISON

Marve Starbuck  
269-649-1991  
[greenstone@iserv.net](mailto:greenstone@iserv.net)

### EDUCATION COMMITTEE CHAIR

Sherri Crum  
269-383-3731  
[KGMS\\_rockshow@yahoo.com](mailto:KGMS_rockshow@yahoo.com)

### SHOW COMMITTEE CHAIR

Jerry VanNocker  
269-979-3348  
[jerry@travelinginspain.com](mailto:jerry@travelinginspain.com)

### GEMS EDITOR/PUBLISHER

Diane Peterson  
269-962-0874  
[rockin\\_gem@yahoo.com](mailto:rockin_gem@yahoo.com)

### KGMS website:

[www.kalamazoorockclub.org](http://www.kalamazoorockclub.org)

## MEETINGS

Monthly meetings are the first Tuesday of each month except: January, July and August  
**Location:** Portage Senior Center  
320 Library Lane Portage, MI 49002  
Phone: 269-329-4555

### Work bees/Picnic Dates

TBA in July and August

## 2013 KGMS ANNUAL SHOW

(May 3rd, 4th & 5th 2013)  
Always the weekend before Mother's Day at the Kalamazoo County Expo Center 2900 Lake Street ( Kalamazoo Fairgrounds) Kalamazoo, MI 49048  
phone: 269-383-8778  
website:  
[www.kalcounty.com/parksshow\\_calendar\\_expo.php](http://www.kalcounty.com/parksshow_calendar_expo.php)

## CLUB DUES

Due by December 31st  
Family \$15.00/year  
Single \$13.50/year  
Senior/Couple 60 yrs \$13.50/yr  
Senior/Single 60 yrs \$10.00/year  
Student \$8.00/year

## AFFILIATED WITH

**AFMS:** American Federation of Mineralogical Societies  
website: [www.amfed.org](http://www.amfed.org)

**MWF:** Midwest Federation of Mineralogical and Geological Societies  
webpage: [www.amfed.org/mwf](http://www.amfed.org/mwf)

## MICHIGAN ROCK CLUBS PAGES

MIRockClubsPages.org  
Administrator/Editor: Diane Peterson  
269-962-0874



**HAPPY VALENTINES DAY!!**

## CROSSWORD PUZZLE ANSWERS

### Across

---

3. **AGATE**—The most collectible of Lake Superior's native rocks and minerals.
7. **DOG TOOTH CALCITE**—Cluster of points that looks similar to canine teeth.
9. **BASALT**—A dark greenish gray to black, some are dark reddish-brown, volcanic rock.
12. **SANDSTONE**—Brown, red, or yellow sand-sized grains of quartz "cemented" together
14. **DATOLITE**—Cali-flower outside texture, porcelain-like white or pink inside.
15. **BRECCIATED AGATE**—Rare Agate has been crushed then randomly reformed with Silica and Quartz.
16. **MATRIX**—The base is where a crystal or many crystals sit
17. **PUMPELLYITE GREENSTONE**—Small dark to light green nodules with a "turtle back" pattern when broken or polished

### Down

---

1. **APACHE TEARS**—A black-brown, silica-rich, roundish semi-transparent volcanic rock, a legend of Indians found in the SW.
2. **QUARTZ PEBBLES**—Very common mineral, can be white, gray, light yellow, usually translucent and resemble frosted glass
4. **MICA**—Flaky Mineral
5. **ROCKS**—A combination of minerals
6. **MINERALS**—A crystalization or solidification of a compound.
8. **CRYPTOCRYSTALLINE**—Microscopic "hidden crystals"
10. **LIMESTONE**—Feels slightly chalky, contains traces of fossils of millions of years ago
11. **SELENITE**—Well formed tabular, clear, gray, white, green, golden brown, and closely related to fibrous gypsum
13. **GEMSTONE**—A piece of a cut and polished mineral used to make jewelry.

\*\*\*\*\*

### A MESSAGE FROM A FELLOW CLUB MEMBER.....

Hello fellow club members,

I am currently enjoying the weather at the Tucson Gem and Mineral Show! Hope you're enjoying the weather in Michigan....

Over the past few years I have purchased for friends many different lapidary supplies. Grit, rough, blades, laps, etc....

If you are interested in adding to the pile, E-Mail me at [stonehouserock@cs.com](mailto:stonehouserock@cs.com) with your needs. Please include a budget and specific details.

Thanks,  
David Haas

THANK YOU DAVE, FOR THINKING OF THE FREEZING FOLKS BACK HOME!